

49/167

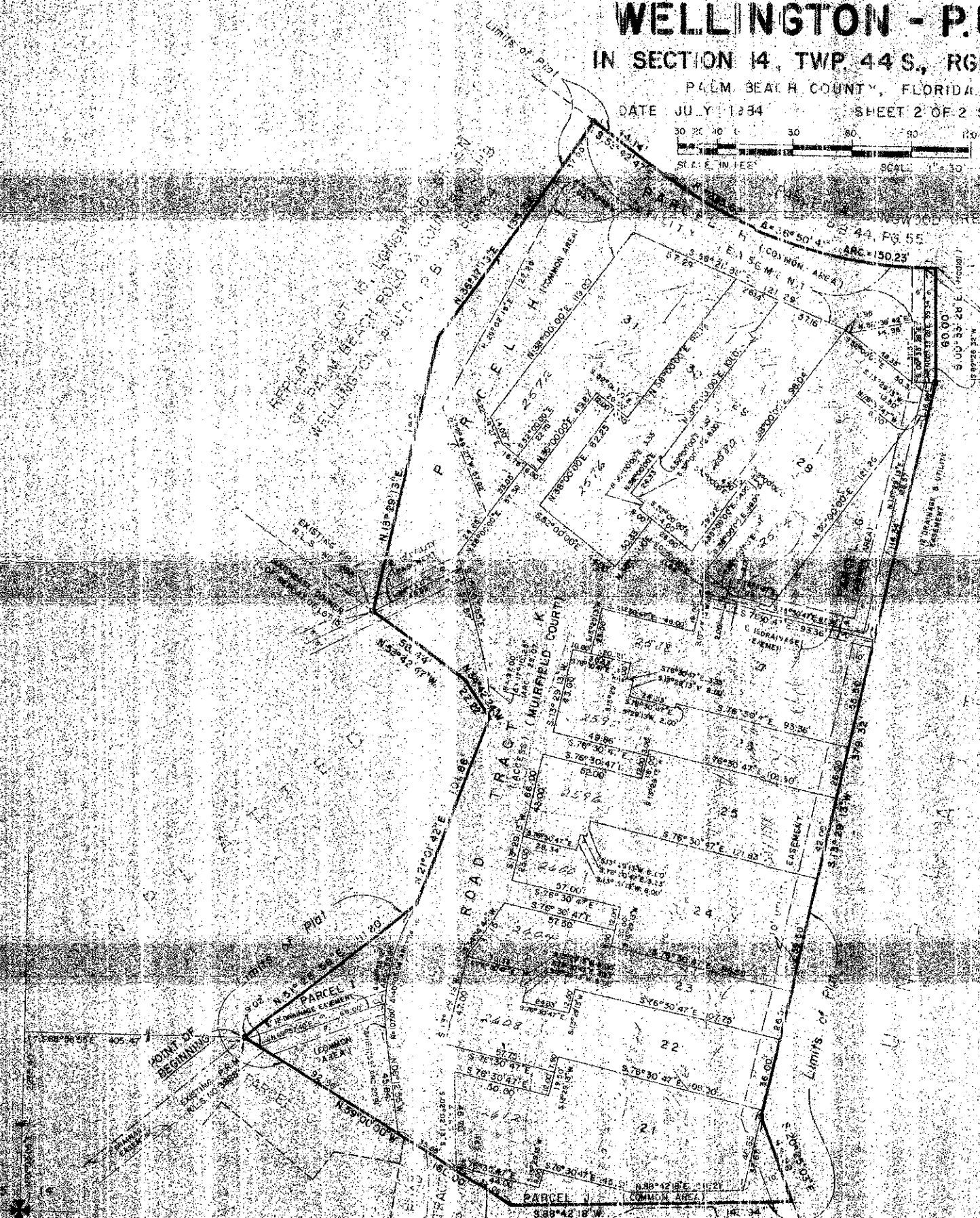
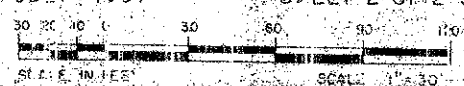
49/167

# MUIRFIELD - PLAT NO. 2 OF PALM BEACH POLO AND COUNTRY CLUB WELLINGTON - P.U.D.

IN SECTION 14, TWP. 44 S., RGE. 41 E.

PALM BEACH COUNTY, FLORIDA

DATE JULY 1984 SHEET 2 OF 2 SHEETS



- NOTES**
- ALL BEARINGS SHOWN HEREIN ARE BELIEVED TO BE ASSUMED PERIODIC USED THROUGHOUT WELLINGTON.
  - BUILDING SETBACK LINES SHALL BE AS REQUIRED BY PALM BEACH COUNTY ZONING REGULATIONS.
  - NO STRUCTURES, TREES OR SWINGS SHALL BE PLACED ON DRAINAGE EASEMENTS.
  - APPROVAL OF LANDSCAPING OR UTILITY EASEMENTS OTHER THAN WATER AND SEWER SHALL BE OBTAINED WITH THE APPROVAL OF ALL UTILITIES OCCUPYING SAME.
  - WHERE DRAINAGE EASEMENTS AND UTILITY EASEMENTS CROSS, DRAINAGE EASEMENTS SHALL TAKE PRECEDENCE.
  - DENOTES PERMANENT RETENEMENT MARKING
  - DENOTES PERMANENT CENTRAL POINT

APPROVED FOR THE CITY OF WELLINGTON  
 BY: [Signature]  
 TITLE: [Title]  
 DATE: [Date]

0330-316

49/167 #2  
MUIRFIELD OF P.B.P.

THIS INSTRUMENT WAS PREPARED BY:  
NICK MILLER OF DAILEY FOTONY INC.  
1020 SOUTH RITZLY TRAIL  
WEST PALM BEACH, FLORIDA 33409

**Dailey-Fotony, Inc.**  
 LAND SURVEYORS, PLANNERS, ENGINEERS